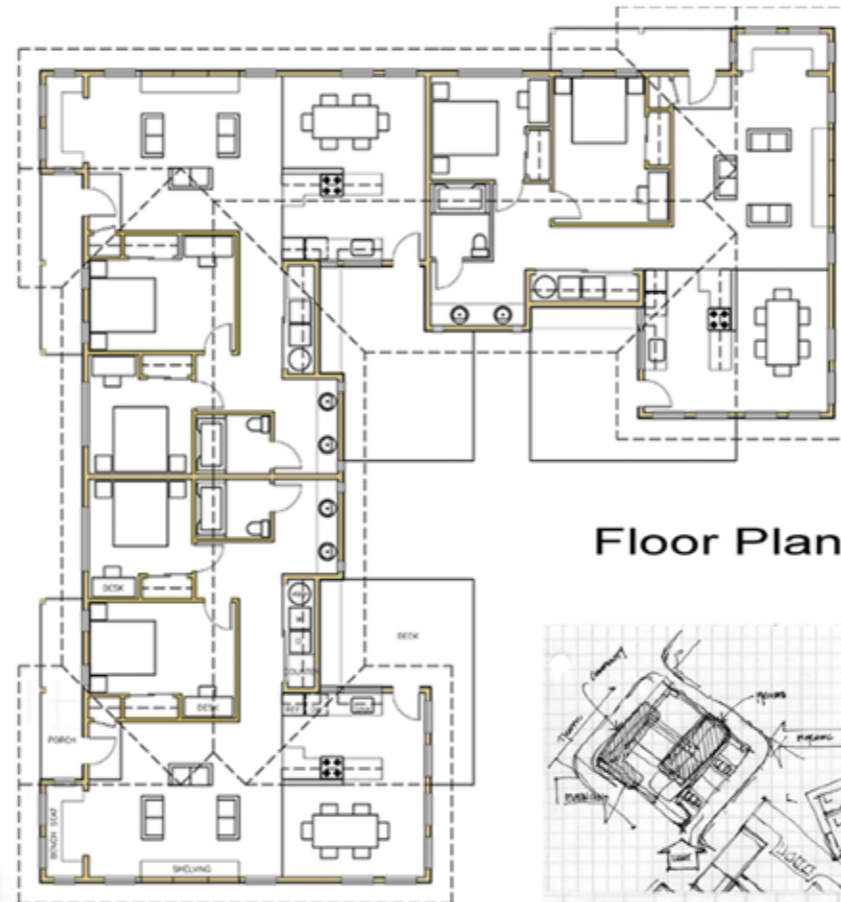


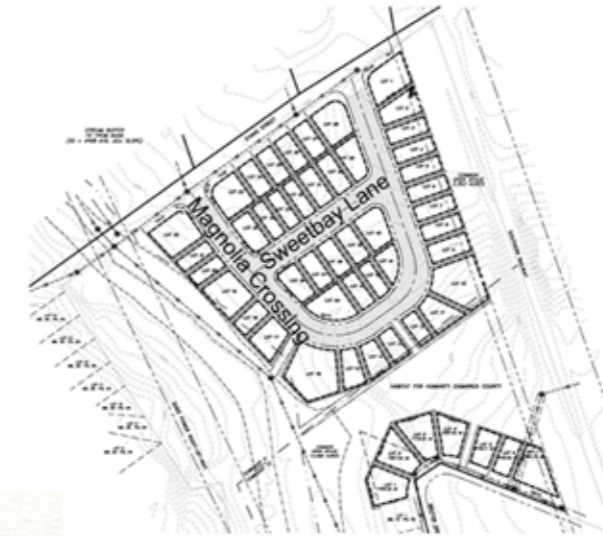


Elevations



Floor Plan

The Williams Plan is a collection of three, two bedroom units. The building is oriented to maximize morning light for morning activities, and evening light for evening activities. Sunlight streams through the kitchen for eating breakfast, while the easy chairs on the front porches capture the setting sun. Consideration is given to the spatial needs of the community, family and the individual. The building is massed to create density along the public way and tucks parking behind.



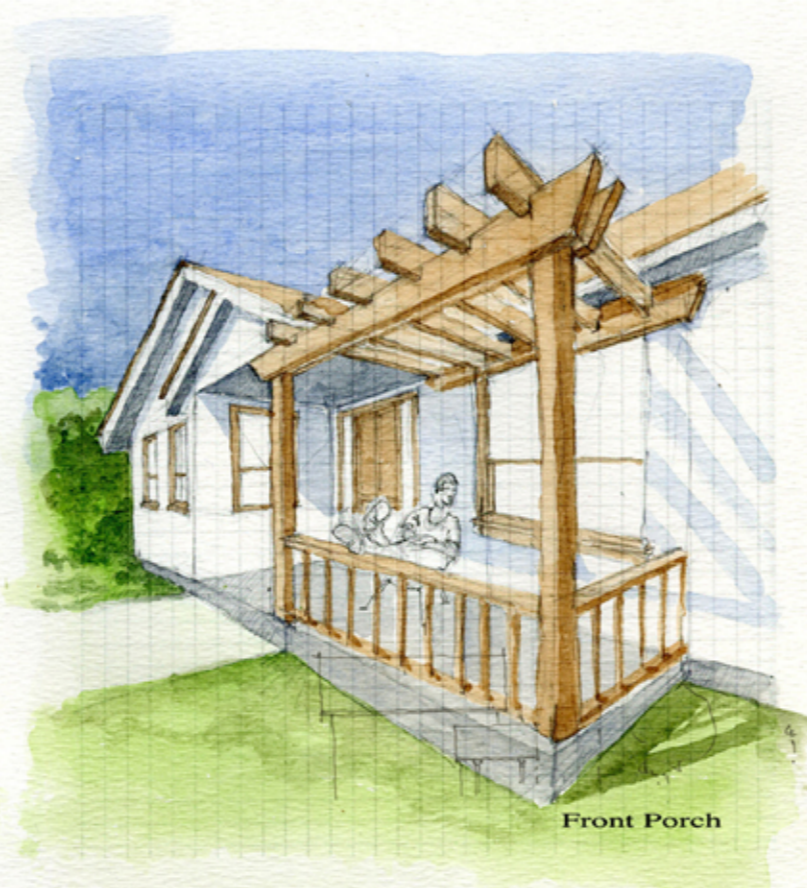
Magnolia Crossing - Site Plan

The site plan is designed to have homes situated closer to the street and to provide larger front porches. The front porch allows the homeowner's to have places to meet their neighbors and creates a sense of community. The lots are a variety of sizes therefore allowing numerous styles of homes. Habitat, within this development, will unveil several new home types, such as patio homes and Charleston type row houses. The new development also incorporates a large park with picnic shelters, playground, and walking trails.



Kitchen/Dining Room

Living Room/Entry



Front Porch

CARLOS MOORE ARCHITECT, PA
 222 CHURCH STREET NORTH
 CONCORD, NC 28025
 T: 704.788.8333
 F: 704.782.0487
 www.cmoorearch.com

THE WILLIAMS PLAN

4 BEDROOM



HABITAT
 for
 HUMANITY

8 Church St. S.
 Concord, NC 28085
 T: 704.786.4001
 F: 704.782.6222

